

SS270V

COMFORT EFFICIENT EPITOME VALUES

QUALITY **NEW MASTERPIECE**
CHANGES THE WORLD
品质改变世界



● Engine power
61.3 kW / 82.2 hp

● **Operating Weight**
4300 kg / 9480 lb

● Rated load
1290 kg / 2850 lb

● **High Flow**
133 L/min / 35.1 gpm

KEY FEATURES

● Comfortable ride

Spacious and well-sealed cab with noise levels low. Upward-opening door for convenient access.

● Intelligent operation

Stable driving and automatic leveling systems with hydraulic pilot control and DA power distribution technology for precise movements.

● Efficient performance

Vertical lift structure with high unloading height, dual-speed configuration, and quick transition speed for fast and efficient work.

● Versatile use

Standard and high-flow output options with various attachments available, such as buckets, sweepers, snow removers, millers, and augers, to meet different job requirements.

PERFORMANCE PARAMETERS

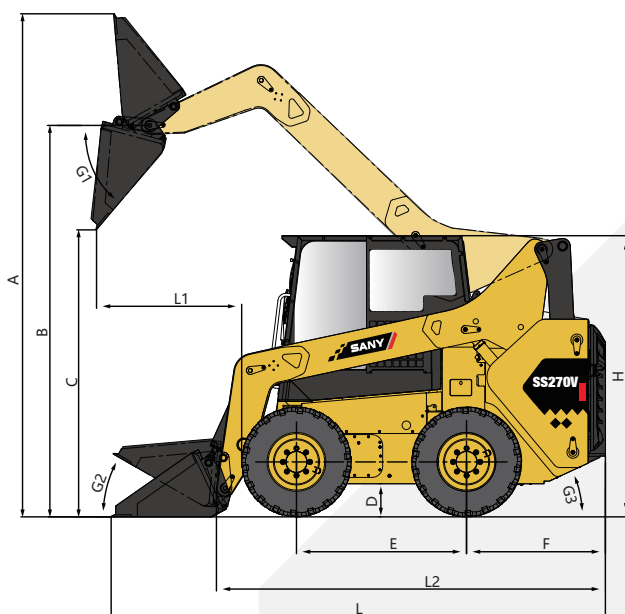
SS270V

Engine Model	Yanmar 4TNV98T
Engine Speed	2400 rpm
Rated Power	61.3 kW / 82.2 hp
Peak Torque	280 N.m / 206 lbf-ft at 1850 rmp
Displacement	3.319 L / 203 in ³
Aspiration	Turbo-charger
Emissions	Stage III
Cycle Time (Raise/Lower/Dump)	9.3 s
Loader Hydraulic Pressure	23 MPa / 3336 psi
Battery Voltage	12 V
Diesel Tank	100 L / 26.4 gal

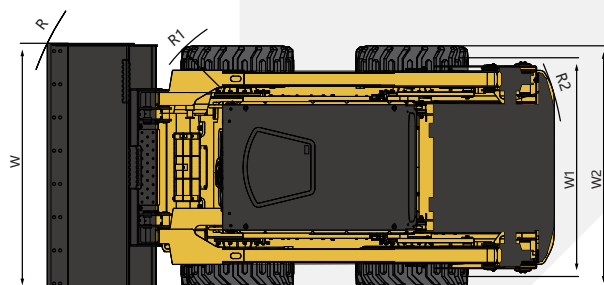
Rated Operating Capacity	1290 kg / 2850 lb
Tipping Load	2580 kg / 5700 lb
Operating Weight	4300 kg / 9480 lb
Breakout Force, Tilt	28.8 kN / 6670 lb
Cylinder One Speed	11.1 km/h / 6.9 mph
Two Speed	20 km/h / 12.4 mph
Tire Size	12-16.5 14 PR
Standard Flow	90 L/min / 23.8 gpm
High Flow	125 L/min / 33 gpm
Lift Geometry	Vertical Lift
Cab	FOPS & ROPS

OVERALL MACHINE SIZE

SS270V



A Maximum Overall Height	4200 mm / 165.5 in
B Bucket Pin Height at Maximum Lift	3350 mm / 132 in
C Clearance at Maximum Lift and Dump	2620 mm / 103.2 in
L1 Reach at Maximum Lift and Dump	985 mm / 38.8 in
D Ground Clearance	228 mm / 9 in
E Wheelbase	1300 mm / 51.2 in
F Bumper Overhang behind Rear Axle	1050 mm / 41.4 in
R Turning Radius from Center-Bucket	2230 mm / 87.9 in
R1 Turning Radius from Center-Coupler	1352 mm / 53.3 in
R2 Turning Radius from Center-Machine Rear	1733 mm / 68.3 in
G1 Maximum Dump Angle	43 °
G2 Rollback Angle of Bucket on Ground	30 °
G3 Departure Angle	25 °
L2 Length without Bucket	2991 mm / 117.8 in
L Length with Bucket on Ground	3756 mm / 148 in
W1 Wheel Track	1485 mm / 58.5 in
W2 Width without Bucket	1820 mm / 71.7 in
W Width with Bucket	1880 mm / 74.1 in
H Height to Top of Cab	2100 mm / 82.7 in



Huzhou Sany Loader Co., Ltd.

NO.18-666, Industrial Road, South Taihu Lake High-Tech Industrial Park, Wuxing District, Huzhou City, Zhejiang

Web: <http://www.sanyglobal.com>

Materials and specifications are subject to change without further notice in accordance with our continuous technical innovations. Photos and illustrations may or may not include additional equipments.

Printed in CHINA